



# Go, Tell.

Reach, Serve and Love like Christ

December, 2011

## The Journey

*By Pastor Drew*

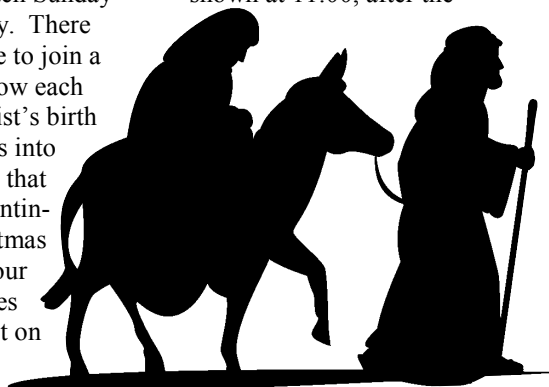
This Advent we have had the opportunity to journey with Mary and Joseph as they travel to the manger where Christ was born into the world and into our lives. We have incorporated our worship with our group studies in order to gain a better understanding of the majesty and the mystery of the Incarnation, God's becoming human. I pray that you have been blessed though this study so far!

If you have not had the opportunity to join a study group, I encourage you to attend the video presentation at 10:00 each Sunday in the Sanctuary. There you will be able to join a discussion of how each element of Christ's birth narrative speaks into our lives. Note that The Journey continues up to Christmas day. Even if your study group does not plan to meet on

Dec. 25, I encourage you to find another time or day to discuss this final chapter. The weekly video will be shown at 11:00, after the

combined Christmas worship service at 10:00. The DVD will also be available for viewing at any other time, if your group so chooses.

As we await the greatest gift of God's own son this Christmas, I join you in celebrating all that God is doing in our lives, in the life of Orange City UMC, and all across the globe. Merry Christmas to all, and may God's blessings be upon you in the New Year!



## Our Church Goes On...

*By Greg Darnell*

A lot of good things have happened at Orange City UMC this year – hopefully it is all the basis for greater things to come.

Overall, we are trying to focus on a systematic approach to “making disciples”. Part of this will be to clarify what we mean by the term, and part of it will be to identify a plan and appropriate resources for accomplishing it. One of the tools we hope to use is balanced small groups.

Stephanie Parks is on board as our Director of Children and Youth Ministries and is helping to develop and sup-

port a growing ministry in this area.

Tammy Miller, Heidi Ordaz, and Nick Melton are helping to add vitality to our worship services. Their job is not to perform for us, but to help us experience meaningful encounters with God as we worship together as one piece of Christ's Church. In addition, Tammy's job description was expanded to include some of the tasks identified to a Director of Music Ministries, funded by a part of the John Pollock bequest.

Please turn to **Goes On, 3**

## Christmas Eve Worship 7 pm—Candlelight Family

There will be two worship services on Christmas Eve with two very different styles. The first worship starts at 7 pm and will be a lessons and carols style Traditional Family Worship service where the children will help tell the story. The next worship starts at 11 pm and will be a contemplative worship service of song, word and silence. Both of these services will take place in our Sanctuary on December 24.

## Christmas Day Worship

Christmas Day will take place on a Sunday this year! Our Christmas Day Worship will be a Traditional style service that celebrates the birth of Jesus! This service will be on Sunday, December 25th at 10 a.m. Our regularly held worship services at 9 a.m. and 11 a.m. will meet together for this special day!



We are fortunate here at OCUMC to have a small but talented group of employees sharing their passion and expertise to help create a vibrant and caring environment at our church. In 25 words or less we will attempt to describe each staff member's role and how they impact our church.....

**Pastor**

**Rev. Drew Dancey** 40 – 60 hours weekly

The Pastor is the CEO of our church responsible for ensuring the church fulfills our mission of reaching, serving and loving like Christ. He equips lay leadership with the guidance, encouragement and tools to effectively provide leadership for OCUMC.

**Administrative Assistant**

**Celeste Gilmore** 30 hours weekly

Serves as the Pastor's administrative assistant, manages the church office and generally provides administrative support for multiple ministries of the church.

**Director of Children and Youth**

**Stephanie Parks** 20 hours weekly

Provide leadership and direction to grow the Children and Youth programs. Recruit, train and nurture volunteer leaders to help realize growth in the program. Maintain focus on discipling, leadership, outreach, administration and creating a healthy and welcoming campus environment.

**Worship Leader – Relaxed Fit**

**Nick Melton** 12 – 15 hours weekly

Plan, coordinate and lead an energetic and vibrant worship experience through music for the 9 a.m. contemporary service. Create opportunities for youth and others to participate in worship and various other music opportunities/events.

**Choir Director**

**Tammy Miller** 12 – 15 hours weekly

Plan, coordinate and lead a meaningful worship experience for the 11 a.m. traditional service. Lead a variety of music programs including the adult choir, cherub's choir, bell choir and multiple special programs/events.

**Children's Coordinator**

**Celeste Gilmore** 10 hours weekly

Responsible for the implementation of programs, initiatives and events throughout the year that create a nurturing and exciting learning environment for children.

**Accompanist**

**Heidi Ordaz** 8 – 10 hours weekly

Provides musical accompaniment through the piano and organ for the 11 a.m. traditional service and special events in the church.

**Treasurer**

**Julienne Ivory-Saccone** 8 – 10 hours weekly

Maintain accurate financial records, disburse all money contributed to the church and pay all bills in a timely manner.

**Maintenance**

**Roger Rock** 8 hours weekly

Conducts regular inspections for all church buildings and provides light maintenance and repairs.

**Nursery Coordinator**

**Lou Ann Gossett** 3 - 6 hours weekly

Coordinate appropriate staffing of the nursery Sunday mornings and for special events. Responsible for creating a safe, clean and caring environment for children.

**Nursery Workers**

**Sloane Gilmore, Beckie Whittle** 3 hours weekly

**Nursery Worker Substitutes**

**Bonnie Reddy, Jennifer Houdeshell** as needed

Provide a Christian, loving and caring environment for children on Sunday mornings and during special events.

Submitted by Staff Parish Relations Chair, Brian Woods

**A Christmas Musi-**

Sunday, December 18th at 6 pm in the Sanctuary  
 The Children and Youth will present 'Arrest these Merry Gentlemen' a Christmas Musical Caper! Come share in the telling of the Good News from the children. Immediately following the musical there will be a reception in the Youth Building. The children have been working on this musical since September and it is filled with drama, song and dance!



## Goes On, Continued from pg 1

As we worship together, a small group of individuals help the little ones in the nursery with their first experience with the church. Lou Ann Gossett, Sloane Gilmore, Becky Whittle and Jennifer Houdeshell perform this important function.

Roger “Rocky” Rock takes care of the most urgent light maintenance needs around the facility. Julienne Ivory-Saccone works behind the scenes to pay our bills and salaries, submit our tax reports, and keep the financial records.

There are many “unpaid servants” who devote a portion of their time to the work of the church, such as: worship assistance (choir, usher, greeters, hospitality, pew monitors), spiritual growth assistance (Sunday School teachers, youth and children’s workers), special groups (prison ministry, Martha’s Cupboard, libraries, food service, UMW, administrative task groups, etc), office assistance (receptionists, money counters, newsletter mailing) and facility support (equipment and building repairs, restroom cleaning, floor maintenance, lawn mowing, landscape maintenance, memorial garden maintenance, etc).

In addition to all of this that we do ourselves and for ourselves, we make our facilities available for groups that our congregational members do not lead (although some are a part of these groups). This is part of our service to the community – and also a way of helping spread God’s message among those our people are not in a position to serve.

We have a number of scouting groups (Girl Scout, Cub Scout, Boy Scout) that meet in our facilities. Scouting is a ministry of the United Methodist Church, but we do not have anyone currently able or willing to actually lead any of these groups at this time. Bob Otte, a member of our congregation, is the church’s representative to these groups. We thank God for the willingness and gifts of others to actually lead the groups. We are privileged to be able to provide a meeting place for them.

The several recovery groups (NA and AA) are a similar situation. These people are more like the “Woman at the Well”—they are struggling with what some would call “demons” in their lives. “There, but for the grace of God, go I.” Most of us have not been



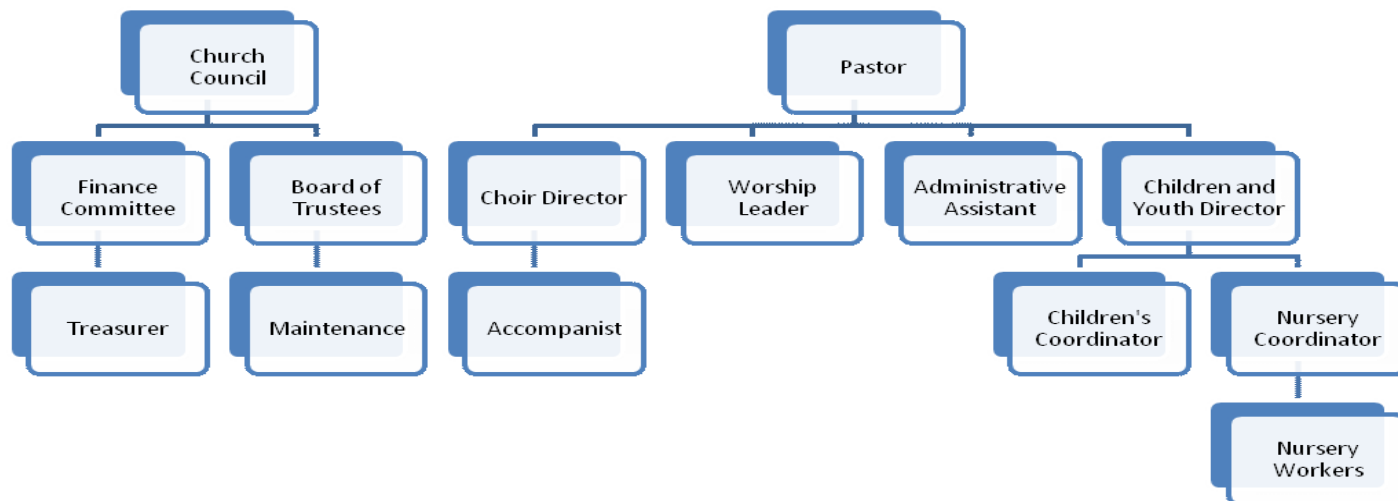
there and don’t want to go there. But we are in a position to provide a meeting place for them and pray that they might be touched by the love of God.

And then there is Pastor Drew who has the task of reminding us each Sunday and every day in between his understanding of how God would have us work together in all of this as we attempt to Reach, Serve, and Love like Christ.

Oh, yes... I almost forgot. There is our Administrative Assistant and Children’s Ministry Coordinator, Celeste Gilmore. She is learning to leap tall buildings in a single bound! She is a key element in trying to keep everything coordinated and in communicating what’s going on. She and Pastor Drew make a great team.

Is there anything you feel called to contribute to the life of our church? Give Pastor Drew a call (or Celeste) at 775-3068.

# OCUMC ORGANIZATIONAL CHART



# What Does It Mean To...

## Reach, Serve and Love like Christ?



### ...Reach Like Christ

Reaching Like Christ centers around how we share the Good News of God's salvation. We can reach out to others by announcing God's grace made available to us by the life, death, and resurrection of Jesus Christ. *Our reaching like Christ, or evangelism, is how we seek to fill the spiritual needs of those around us.* We reach out with God's message of salvation to those who do not yet know Christ, and we reach out to other Christians as we celebrate all that God has done in our lives. We are all called to Reach Like Christ, but we reach out in different ways. Some are gifted to readily share the Gospel; others reach by encouraging one another; still others reach by inviting people to participate in the life of the church. How is God calling *you* to reach out to His children?

### ...Serve Like Christ

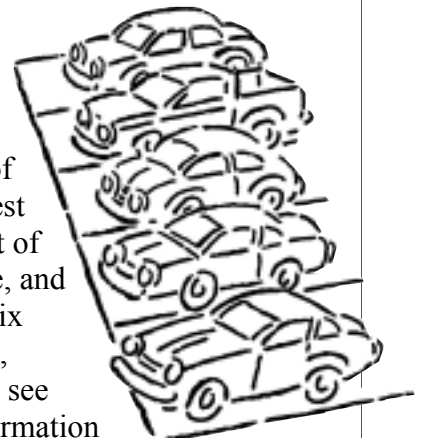
Just as Reaching Like Christ refers to filling spiritual needs, *Serving Like Christ is how we give of ourselves to fill the physical needs of all of God's children.* Jesus instructed us to feed the hungry, give drink to the thirsty, provide shelter for the homeless, and care for our fellow humans in every way possible. When we serve one another, we act as the hands and feet of God in this world. There are countless ways that we can Serve Like Christ. OCUMC provides numerous opportunities for *you* to serve in our surrounding community, or you can give of your time and resources to any of the countless other organizations and agencies here in Central Florida. A good way to find where you can offer your service is to find what breaks your heart and then discover how you can be a part of fixing it.

### ...Love Like Christ

In order to Love Like Christ, we must first experience the love that Christ has for us. Then, as we grow in love of God, we will grow in our love of others. *We Love Like Christ when we grow deeper as disciples in our relationship with God.* By being a part of a small group, taking regular devotional time, and reading the Bible we can experience God's love, love God more completely, and reflect God's love on to those around us. All together we will continue to develop as faithful disciples. How will you fall more deeply in love with God this year? Will you join a small group? Set apart a time each day for prayer? Find new ways to praise your Creator? As a church, we are called to Love Like Christ, For God so loved the world, and for God so loves you!

## A New Model

In order to better Reach, Serve, and Love Like Christ, beginning in January, the Church Council will be operating under a new model. Instead of meeting monthly, the full Council will meet on a quarterly basis (meetings in March, June, September, and December). On a monthly basis, an executive Leadership Team of the Church Council will meet to discern, plan, and strategize how OCUMC can best answer the call that God has put on our church. The Leadership Team will consist of the Pastor, a Reach Representative, a Serve Representative, a Love Representative, and an Administrative Liaison. This team will be tasked with looking ahead three to six months to determine opportunities for the church to grow in the areas of Reaching, Serving, and Loving. They will act as a support to the congregation by helping us see ways that we can partner with God as He works in our community. For more information about the new Leadership Team or the Church Council, contact Pastor Drew.



# CHILDREN AND YOUTH

*By Stephanie Parks*

As I write this, I'm resisting putting up our Christmas Tree and setting our Advent Candles until after Thanksgiving even if the rest of the world isn't. With the Christmas Season comes an overload of service opportunities and Christmas programs for community members to attend. We hope that you will support us in our endeavors to reach, serve and love like Christ.

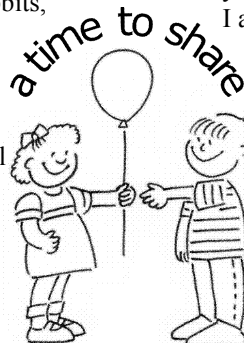
Here's a rundown of what's happening during the busy holiday season. First we have two service opportunities. On December 7<sup>th</sup> during our regular Youth Fusion time (Wednesdays from 6:00-7:30 pm in the Youth Building) we'll be breaking out with some Christmas Spirit: music, hot chocolate and we'll be writing cards to residents at Majestic Oaks. On December 11<sup>th</sup> during the Sunday School hour (10-11:00 am), we'll be accepting donations for Zoe Christmas Animals. This is a fantastic opportunity to give a gift that keeps on giving. By donating money, we'll be able to purchase animals (rabbits, chickens, goats, pigs, cows) for families. These families, in turn, can use this animal for food and/or income. On December 19<sup>th</sup>, we'll be partnering with the Coalition for

Homeless of Central Florida sorting donations for the holiday season.

Besides these wonderful ways to get involved, we will also have a Family Celebration Night. I'm so excited about this! It will be on December 21<sup>st</sup> from 5:30-8:00 with activities for all age groups. Parents are welcome to stay with their kids or can use this as an opportunity to get any last minute holiday shopping done. We will be providing a snack supper and then splitting into age groups for activities and games (the youth will do a gift-exchange). After this, we will all come together for a viewing of the newest Vegetables Christmas Movie starring Junior Asparagus: The Little Drummer Boy! It's going to be a fun night! If you are interested in helping out, please contact me or Celeste at sparks@ocumc.org or cgilmore@ocumc.org.

I hope that you take this holiday season to teach your kids, grandkids, nieces and nephews about what this holiday season really means.

I also hope that you'll stay plugged in to our church's activities and invite your friends. This holiday season is about sharing!



## Cantata



Please plan to attend the traditional worship service on **December 18th** when the choir will present

**Celebrate His Name,  
Proclaim His Birth.**

In this unique work, the many names of Christ foretold in the Old Testament are used to proclaim the familiar story of Christmas: "Emmanuel, God With Us" brings to life Mary's visit from the angel; "Son of David" depicts the journey to Bethlehem; and "King of Kings" involves the Wise Men and the congregation in worship. Lovely original melodies stand alongside familiar carols to create an inspirational musical experience. Scriptural narration joins the seven choral pieces, accompanied by flute, cello and piano. This joyous, musical worship is sure to delight.



## Family Information Update

We are beginning a clean up our family membership information in preparation for a new church directory early next year. The plan is to have our computer database cleaned up by the end of the year so that we can verify this information when photos are taken in January.

A copy of our current information will be available in the narthex on **December 11th & 18th** for pick up so that we don't have to pay postage on them. Any that isn't picked up after those two Sundays will be mailed on the 19th.

The directory will include all Professing Members (previously called Full Members), Affiliate Members, Associate Members, and Clergy (Pastor Drew) and members of their families living at the family address. It will also include other individuals who are actively a part of our congregational life and their immediate families (if they do not decline to be included)

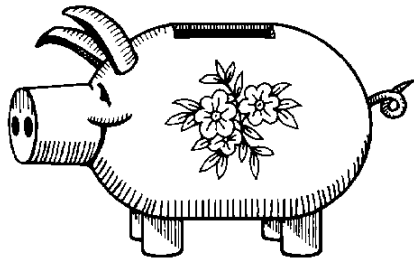
The biggest problem we have with the database is with adult children who are Professing Members, but no longer reside at the parent's address. We need their current mailing address so that they may be included in communications relating to the life of their church.

## What are apportionments?

*By Herb Schwartz*

For many years I have carried the title of interpreter of Connectional Giving as well as serving as your Finance Chairman. Now this interpreter business leaves me in doubt as to what I am required to do. As an interpreter I should be able to translate some mysterious language into terms that are understood by everyone. So I have been waiting to see what language I had to learn in order to perform my duties.

Well there isn't any language involved; only the requirement to tell you about what happens to the funds that we as a congregation give to the United Methodist Church at large.



Every year the Florida Conference through the District office suggests an amount each church should donate for the operation and support of all the missions and programs of the worldwide Methodist Church. It gives us an opportunity to participate in a small way on a proportionate basis in such undertaking as missionary work in 80 countries, support of Methodist colleges in the U.S. and Africa, ministerial Scholarships, Methodist

Children's homes and anything else you can think of connected with the Methodist Church. More importantly 85% stays right here in the Florida Conference.

Now how do we as congregation meet the suggested apportion of \$23,899 for 2012? First of all it becomes a budget item in our budget. The amount is different for every church because it is based upon what each church spent on themselves to operate their church two years ago. A couple of years ago, our church council looked at apportionments as a tithe. If we ask our congregation to tithe then we as a congregation should also tithe to the church at large. Conse-

quently, the Finance Committee has been setting aside 10% of your contributions to the general fund. This does not include any specifically named donations that you may include in your giving but it does include any funds designated for missions.

This year the 10% allocation is falling short of the suggested amount, hence the request for additional funds to meet the short fall in both operating and benevolent funds. We ask that you consider the church when allocating your year end financial contributions.

## Small Groups Get Emphasis

We will begin to implement a plan to emphasize and provide support for the development and growth of balanced small groups during the New Year. These groups will be aimed at fully implementing our Mission and Vision to Reach, Serve, and Love like Christ.

Many of our existing small groups are what I would consider "special purpose" formed and exist to accomplish a specific task. These are largely aimed at helping us to use our spiritual gifts in service.

The coming emphasis will be on balanced spiritual

growth of the individual and the small group of which the individual is a part. These groups largely will not meet in the church facilities, but elsewhere in the community where friends who may not be comfortable in the church environment can participate more freely.

I expect some resources to help us with this to be available in February. In the meantime, we will be forming a small support group to begin considering how we might best accomplish this at Orange City UMC.



If you feel called to consider being a part of the support group, contact Greg Darnell at 456-1297.

## Fulfilling, Continued from back cover

d. Develop a system of obtaining feedback for people serving in ministry and using their gifts – each group will do an annual evaluation and as part of that evaluation we will get feedback from each member. They’ll be asked if their gifts have been utilized in the ministry and other questions relating to members’ gifts as well as gifts needed for the group.

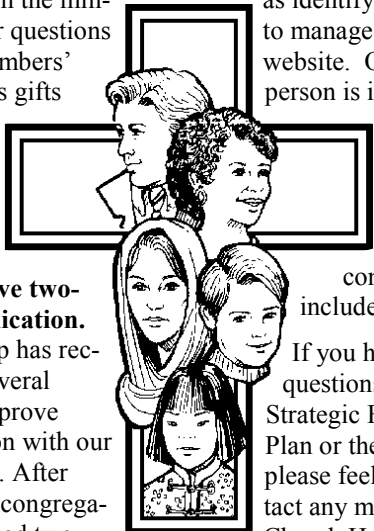
### Empower a team to identify and insure effective two-way communication.

The task group has recommended several changes to improve communication with our church family. After surveying the congregation they created two categories: those that prefer printed method and those that prefer digital methods. There will be overlap built into the process. The Administrative Assistant will be responsible for receiving and processing certain communications like the Sunday announcements, the weekly email, the weekly bulletin and will manage the calendar. The

remainder of the communications tools: newsletter, bulletin board, expanded prayer list and web content will be the responsibility of the Communications Team. The task group is also recommending adding more people to the team as well as identifying a person to manage the church’s website. Once that person is identified, the website will be re-designed and a larger amount of content will be included.

If you have any questions about the Strategic Five Year Plan or the initiatives, please feel free to contact any member of the Church Health Team.

*From Jill Woods, Church Health Team Chair. Church Health Team: Greg Darnell, Libby Goens, Bonnie Reddy, and Pastor Drew Dancey. We appreciate the service of Caryl Hunter and Bill Koos who have recently resigned from the committee after many years of service.*



## Work Day A Success!

During the church grounds clean-up a lot of work was done and the basketball hoop at the Youth Building was replaced. Thanks to all who helped. There is still more work that can be done. Many of the hedges need weeding under them and edging of the lawn around them. The big hedges along the West and South sides of the property need trimming. This is a great service project for individuals, families, or groups to be responsible for specific pieces of the landscape. If you might be interested in such a thing, contact Tom Smith or Greg Darnell through the church office 386 / 775-3068.

## Stewardship still going on...

In November there was a 5-week worship emphasis on stewardship. In the United Methodist Church, this pretty much is an annual event in one form or another in every congregation.

It is good to be reminded of this aspect of our Christian faith. Stewardship is another way of looking at the fruits of our faith. Constant recognition that we are stewards of all that God has entrusted to us leads us to daily consider what God has entrusted to us. With this recognition, we are led by our faith to respond to all of life’s situations – whether it be the environment, our talents, time, monetary resources, service, witness, relationships, or anything else we might consider.

**How much am I going to keep for me, and how much will I devote to others? This is the stuff of daily living.**



## Review Your Giving Plan

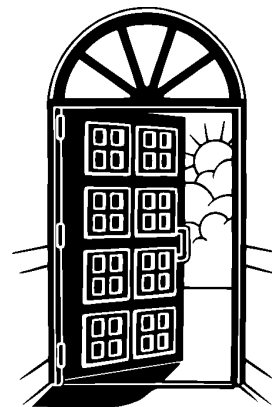
**The New Year is upon us – time for resolutions and all that stuff.**

Most of us – hopefully all of us—have some sort of estate planning documents – will, trust, etc. When is the last time you reviewed your plan? Is your church included? Have your circumstances changed? Are all the people named in your plan still alive?

A good task for the end of 2011 or the beginning of 2012 is to review your estate plan to make sure it is up-to-date and reflects your current wishes. Don’t rely on memory – actually read the documents or have them read to you.

## God’s House is Our House

The church facilities are part of your home. If you notice anything that you feel needs attention, please let the office know. Lights left on, doors left open, a toilet running, paper towels out, etc, -- things like this may not be what we would like to have happen, so please let us know so we can take appropriate action. You can leave a message on the voice mail at 775-3068 at any time the office is not open. When the office is open, you may even be able to speak with someone!





**Orange City  
United Methodist Church**  
*Reach, Serve and Love like Christ*

396 E University Ave  
Orange City, FL 32763  
(386) 775-3068  
www.ocumc.org  
ocumchurch@ocumc.org

Non-Profit Organization U.S. Postage PAID Mid-FL, FL Permit No. 63008
---

**ADDRESS SERVICE REQUESTED**

## OCUMC Fulfilling the Mission

*By Jill Woods*

As you recall the Church council endorsed a Five Year Strategic plan in March 2010. That plan spelled out nine initiatives that, when implemented, should result in a healthier church able to fulfill its mission and vision. The Church Health Team appreciates the commitment of those who faithfully serve on the teams charged with implementing these initiatives. Here's an update on two of the initiatives that have recently been completed:

**Refine the spiritual gifts management process.** The Committee on Nominations and Lay Leadership has completed their work on this initiative. They were asked to refine the gifts management process to:

**a.** Provide Regular/ongoing gifts assessment – Gift assessments have been offered multiple times at a particular time; now they are offered

conveniently in a take-home format. (You can find these in the Narthex and after completed, you can return to the church office if you wish.)

**b.** Create a system to align ministry opportunities with identified gifts – each ministry for the church completed (and will update) a Ministry Information Sheet that identifies each group's mission and what spiritual gifts most closely align with their job description. These will be available in a variety of formats, making them easy for members of the congregation to browse ministry opportunities.

**c.** Assist ministries to determine what gifts are needed to fulfill their mission – in consultations with the lay Leadership and Nominations committee; groups identified primary and secondary gifts with the mission of the group.

Please turn to **Fulfilling, 7**

### Inside this issue:

The Journey	1
Who's Who on the Staff	2
Organizational Chart	3
Reach, Serve & Love	4
Children & Youth	5
Small Groups	6
God's House	7