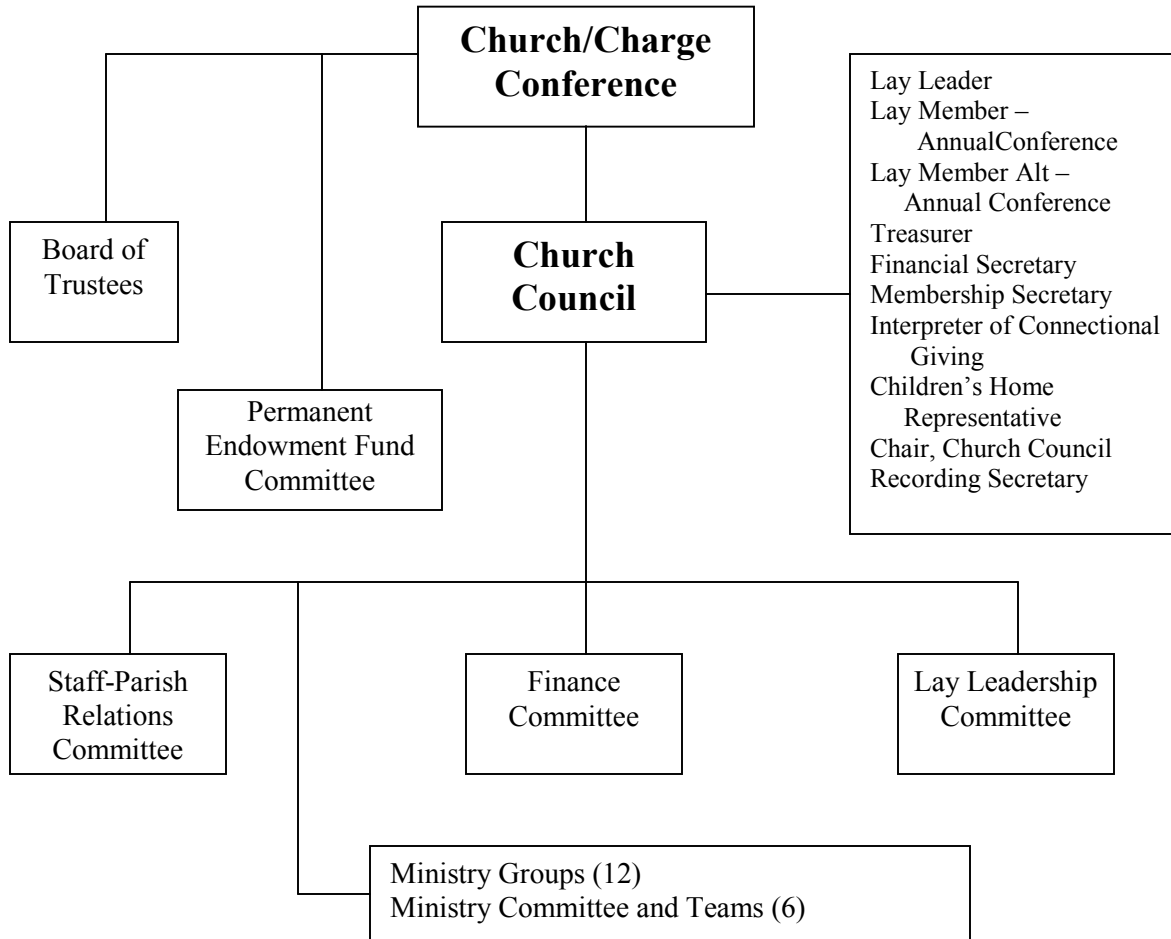


2011 Organization Chart Orange City United Methodist Church



Note 1: Membership of the **Church Council** consists of the chairpersons/leaders of each of the groups/teams shown above, plus the officers listed at the upper-right.

Note 2: Membership of the **Charge Conference** is the same as membership of the Church Council. The Charge Conference is chaired by the District Superintendent or his designee.

Organization

2011

Our Staff

Andrew "Drew" Dancey
Pastor

Celeste Gilmore,
*Administrative Assisant &
Children's Ministries Director*

Nick Melton
Worship Leader

Stephanie Champagne
Director, Children & Youth Ministries

Nikita Hernandez
Choir Director

Heidi Ordaz
Accompanist

Lou Ann Gossett
Nursery Coordinator

Roger "Rocky" Rock
Maintenance

ELECTED OFFICERS

<i>Church Council Chair</i>	Richard Rowland
<i>Church Treasurer</i>	Julienne Ivory-Saccone
<i>Financial Secretary</i>	Alice Darnell
<i>Lay Member of Annual Conference</i>	
Lay Member	Barbara Graham
Alternate Lay Member	Open
<i>Lay Leader</i>	Rosemary Ward
<i>Recording Secretary</i>	Frances Bernhardt
<i>Membership Secretary</i>	Mercy Vincent

ADMINISTRATIVE COMMITTEES

STAFF-PARISH RELATIONS COMMITTEE

Brian Woods, Chair

2011	2012	2013
Louise Severence	Brian Woods	David Leonard
Dana Lovell	Rock Whittle	Martha Hewett
Pat Schwartz		

Lay Mbr, Annual Conference: Barbara Graham
Lay Leader: Rosemary Ward

COMMITTEE ON FINANCE

Greg Darnell, Interim Chair

2011	2012	2013
	Kim Mallory	Tim Deary
<i>Chair, Church Council</i>		Richard Rowland
<i>Lay Member, Annual Conference</i>		Barbara Graham
<i>Lay Leader</i>		Rosemary Ward
<i>Financial Secretary</i>		Alice Darnell
<i>Treasurer</i>		Julienne Ivory-Saccone
<i>Chair, Staff-Parish Relations Comm.</i>		Brian Woods
<i>Trustee Representative</i>		Thelma Teraoka
<i>Chair, Perm. Endowment Fund Comm</i>		Greg Darnell
<i>Pastor</i>		Rev. Drew Dancey

BOARD OF TRUSTEES

2011	2012	2013
	Thelma Teraoka, Chair	
Thelma Teraoka	Bill Koos	Thelma Bradley
Bonnie Reddy	Becky Whittle	Bob Otte
	Linda Woten	Tom Smith

COMMITTEE ON LAY LEADERSHIP

Pastor: Rev. Drew Dancey, Chair
Lay Leader: Rosemary Ward

2011	2012	2013
Jennifer Houdeshell	Martha Hewett	Betty Koos
	Kim Mallory	Tom Hunter
		Dolly Drumm

PERM. ENDOWMENT FUND COMMITTEE

Chair, Greg Darnell

<i>Pastor</i>	Rev. Drew Dancey
<i>Finance Representative</i>	Greg Darnell
<i>Trustees Representative</i>	Bob Otte
<i>Chair, Scholarship Committee</i>	Richard Rowland
<i>Members at large</i>	Open

SPECIALIZED MINISTRIES

<i>Interpreter, Connectional Giving</i>	Open
<i>Children's Home Representative</i>	Beverly Deary
<i>Scholarship Committee</i>	Richard Rowland
<i>Chartered Org. Rep. for Scouting</i>	Bob Otte
<i>JKV Communion Service</i>	Faye MacKay
<i>Martha's Cupboard</i>	Janice Welander
<i>Church Historian</i>	Janice Welander
<i>Dir. Children's Ministry</i>	Celeste Gilmore
<i>Music Ministries</i>	Open
<i>Pres, United Methodist Women,</i>	Louise Severence
<i>Rep, United Methodist Men,</i>	Greg Darnell
<i>Library Co-Coordinator</i>	Frances Bernhardt
<i>Library Co-Coordinator</i>	Faye MacKay
<i>Bereavement Committee</i>	Open
<i>Prayer Ministry Coordinator</i>	Rosemary Ward
<i>Children & Youth Ministries</i>	Stephanie Champagne

First-Time Visitor Team

Jill Woods	Pat Schwartz	Dolly Drumm
	Barbara Graham	

Church Health Team

Jill Woods, NCD Facilitator

Greg Darnell	Caryl Hunter	Bill Koos
Libby Goens	Bonnie Reddy	

Worship Team

Chair: Open

Jody Valente	Thelma Teraoka	Celeste Gilmore
Jimmie Bryan	Fran MacGregor	Ali Schmitz

Visitation

Susan Lovell	Jimmie Bryan	Phyllis Fretwell
Jean Harrison	Caryl Hunter	Margaret Meyer
Janet Orlando	Clara Rosen	

Communications Team

Facilitator, Pat Saiz
 Celeste Gilmore Becky Whittle

Prison Ministry

Faye MacKay	Vivian Tillman	Phyllis Fretwell
Leah Putland	Jimmie Bryan	Lillian Bowell